



The Isara Yachts 50 Sailing Catamaran - Specification

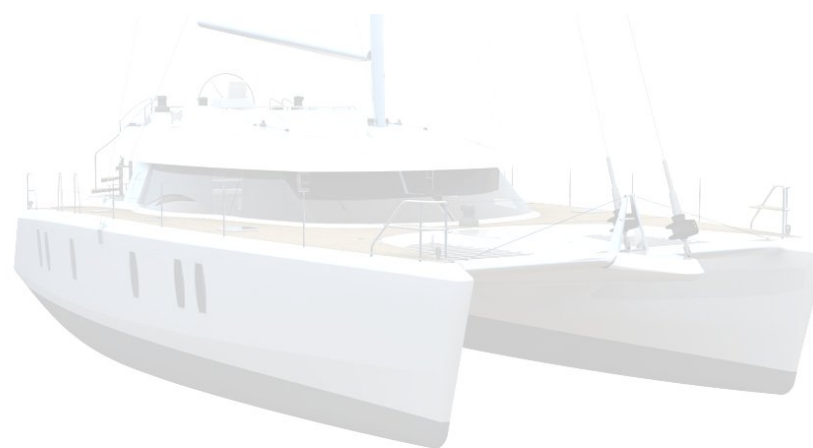


Isara: 'Design, Creativity and Passion'

The Isara 50 Sail has been designed to create the perfect blend of style and function.

By using 'leading edge' design and technology the Isara 50 offers performance without compromising on comfort.

Almost certainly the most spacious yacht available, the Isara 50 Sail is a new breed of yacht offering a range of 'custom styles' and exceptional features as standard.



The Isara Yachts 50 Sailing Catamaran - Specification



General Specification

Length Overall (Moulded): 14.9m

Length Waterline: 13.3m

Beam Max: 7.6m

Draught: 1.4m

Displacement (Estimated Lightship): 14. t

Displacement (Max Operating Condition): 18t

Power: 2 x Yanmar 40 - 75 HP Diesel engines

Transmission: Drives: 2x Yanmar SD 50 Saildrives

Fuel Capacity: 960 litres

Water Capacity: 960 litres

Certification CE Cat A (Ocean)

Maximum Speed: tba

Cruising Speed: tba

Construction: E-glass Hull and Deck

Foam cored Hull and Deck in handlayup

Vinylester and Vacuum Core



On Deck

Forward Peaks:

- Large access hatches on deck, draining overboard, gutter, seals & latches
- 2 Large Lockers, draining overboard, gutter, seals & latches

Forward Lockers

- 2 large storage lockers forward of mast bulkhead, draining overboard, gutter, seals & latches.
- Anchor windlass and chain compartment within deck locker
- Generator compartment.

MAST AND RIGGING

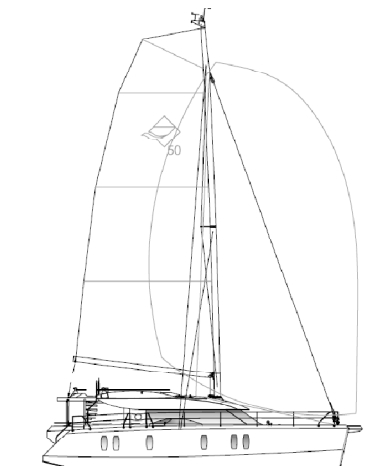
- Mast length 20m in painted aluminium
- Boom length 7.5m in painted aluminium
- Wire Standing Rigging
- 1 Headsail furlers
- Lazy jacks & sail cover bag
- 3 Reefs
- Jackstays
- Mast with ancillaries for aerials, navigation lights, instruments etc

SAILS

- Sail Area (Main and Genoa): 128.89m²
- Fully battened, short roach/foot Main: 76.28m²
- Roller-furling Genoa: 52.61m²
- Sail Area (Main Genoa): 150.25m²
- Fully battened Large Roach/Long Foot main: 97.64 m²
- Roller or head foil overlapping Genoa: 52.61m²
- Masthead spinnaker – asymmetric (Optional extra)

DECK GEAR

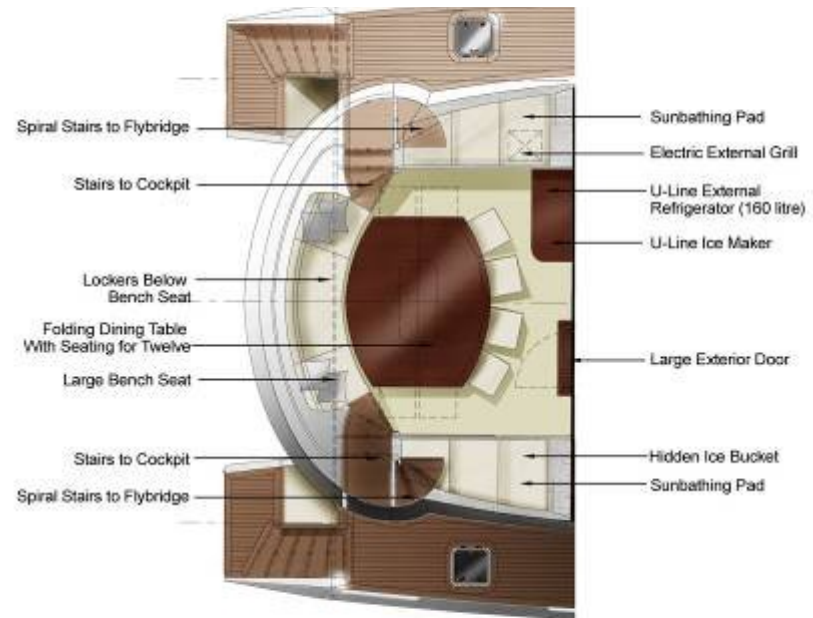
Halyard Winch Harken– Aluminium 2 speed, self tailing Electric
 Genoa sheets 2 x Harken– Aluminium 2 speed, self tailing
 Main sheet Harken– Aluminium 2 speed, self tailing
 Forward tack Harken– Aluminium 2 speed, self tailing



Cockpit

A spacious living area with seating around a table for your entire crew. The table can fold to give you more entertaining space.

- built in electric Tepanyaki style BBQ
- sink with fresh water
- icemaker
- lockers under cockpit seating
- steps port and starboard to side deck
- ½ width sliding door to saloon
- ½ width sliding galley window
- 2 x Stainless Steel ladders to flybridge



Bathing platform & Transom

Ergonomically designed to enable safe and easy boarding from both tender and water, the bathing platform has large lockers for storing snorkeling or fishing equipment and also space to store rubbish bags downwind!

- Teak boarding platform (access from aft & inboard) on each hull with wide rung ladder
- Freshwater Transom shower Hot/Cold
- Davits for tender and outboard – (not shown)
- Life raft storage in rear beam - MCA compliant.
- Diesel fills – Bailey Marine or equivalent spec
- Water fills – Bailey Marine or equivalent spec
- Locker for dive kit/fishing rods/fenders/boat hooks...tender? In rear seating/beam
- Garbage stowage right aft under steps to transom



Flybridge

The Flybridge deck has an elevated 'see all points' helm position and safe access to the fly- bridge from both starboard and port.

- Large sunbathing area and seating for guests with a fold out drinks/snacks table
- Contained seating for 6 pax, including helmsman
- Central helming position
- All sail controls leading to flybridge



The Saloon

The saloon is the most spacious living space to be found on any production or semi production yacht. Boasting dining space for the entire complement of guests, the saloon also has a large galley designed for catering at the highest levels. The galley includes ample fridge space, a freezer, a dishwasher and microwave, as well as oven and hob.

Saloon cont..

- 6/7 seat sofa
- Folding coffee/dining table
- Flat screen TV, DVD, audio system
- 2 x single occasional chairs
- integral LED lighting
- under floor LED courtesy lighting
- Wet locker for storage of crew waterproofs
- Air conditioning
- Master distribution board for all systems

Navigation area (in saloon)

- Deep chart table
- Red chart light on stem
- Raymarine E series chart plotter/ Radar
- VHF
- Joystick (autohelm steering control)
- Other Navigation instrumentation TBA

Galley

- Large double stainless fridge
- Freezer
- Electric hob
- Double sink unit with mixer taps
- Dry storage area for bread biscuits etc
- Large bin space
- extractor fan
- oven
- Microwave
- Dishwasher
- Curved Bar / serving area



The Cabins

The spacious 'Apartment Cabins' have a queen sized double bed with sprung mattress. Ample hanging space and self contained air conditioning. Power points and AV sockets enable personal music players to be connected to the cabins stereo system.

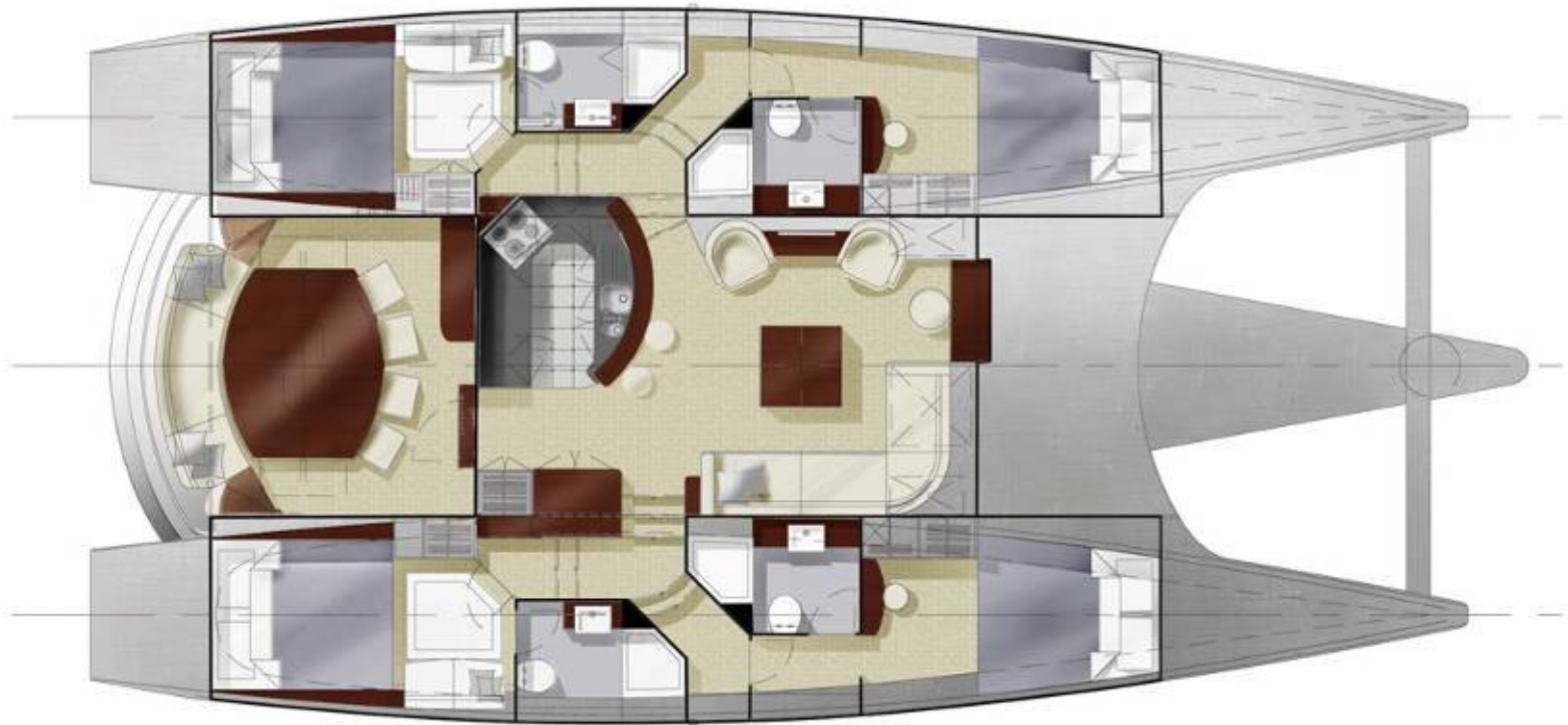
Cabins

- 1 Queen size semi island bed
- Locker and wardrobe lighting
- 1 opening deck hatch with integrated fly and sun screens
- Ventilation
- 1 opening port hole (inside of hull)
- 1 large plexiglass window with one way view
- Direct access door to head and shower
- Mirrors and location
- Lighting and location
- Outlets and location (220 or 110)
- Contained Airconditioning Unit

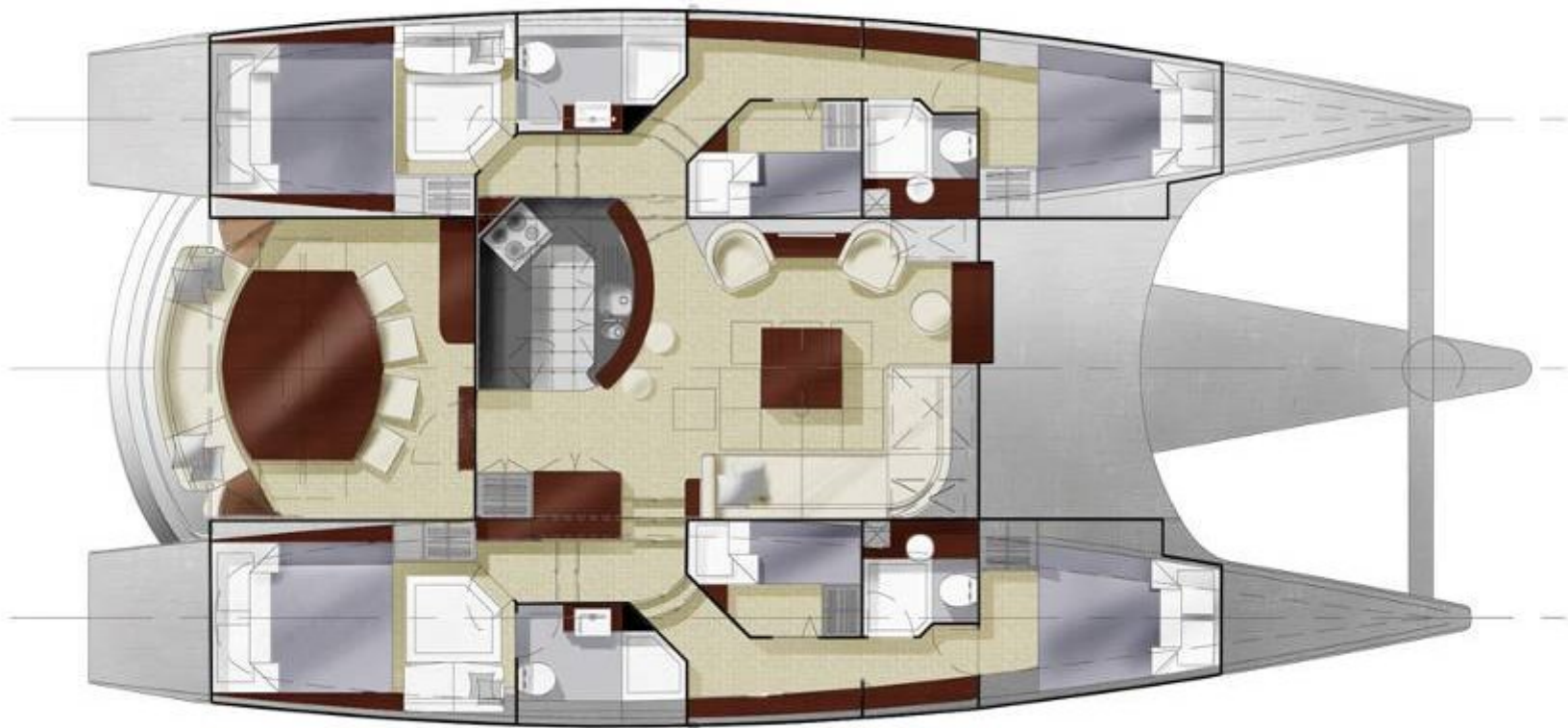


Head

- Wash basin
- Denote counter top finish
- Separate shower with door
- Lockers
- Mirrors, hooks, toilet roll holder, soap holder
- Opening deck hatch with integrated fly and sun screen
- LED lighting



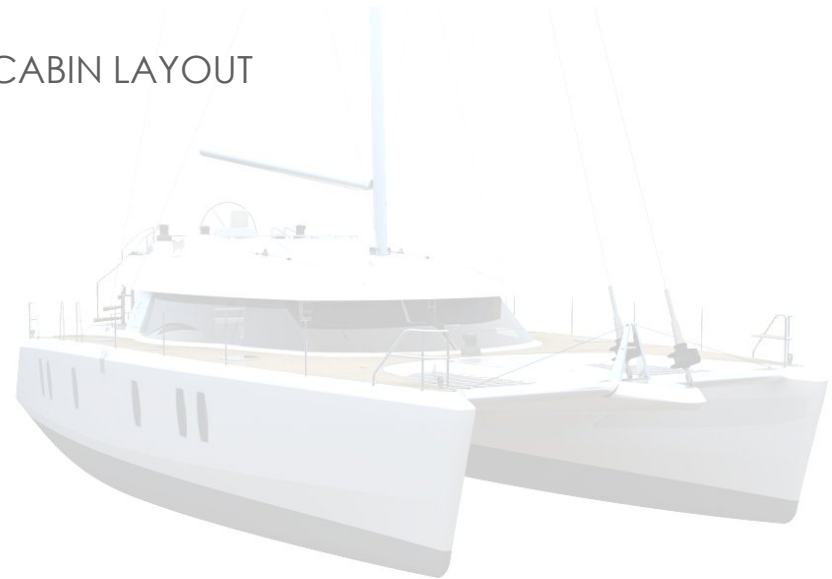
ISARA 50 SAIL 4 CABIN LAYOUT



ISARA 50 SAIL 6 CABIN LAYOUT



ISARA 50 SAIL 2 CABIN LAYOUT



General Specifications

ELECTRICAL

- 2 x 6 x propulsion batteries; 3 house batteries
- Isolated propulsion motor/domestic battery banks
- Location of panels and distribution system?
- Ring main for 220v/110v and 12v not under shore-power
- Shore charging 30 Amp and 50 Amp
- Combined or separate Inverter and Charger (72V)
- Generator 10KW min / 14KW possible With separate starter battery
- Power management system
- Load protection
- Bilge sump for all pumps
- Min per hull: 1 x manual bilge pump below, 1 x electric bilge pump below, 1 manual bilge pump operated from on deck
- LED lighting both navigation and internal

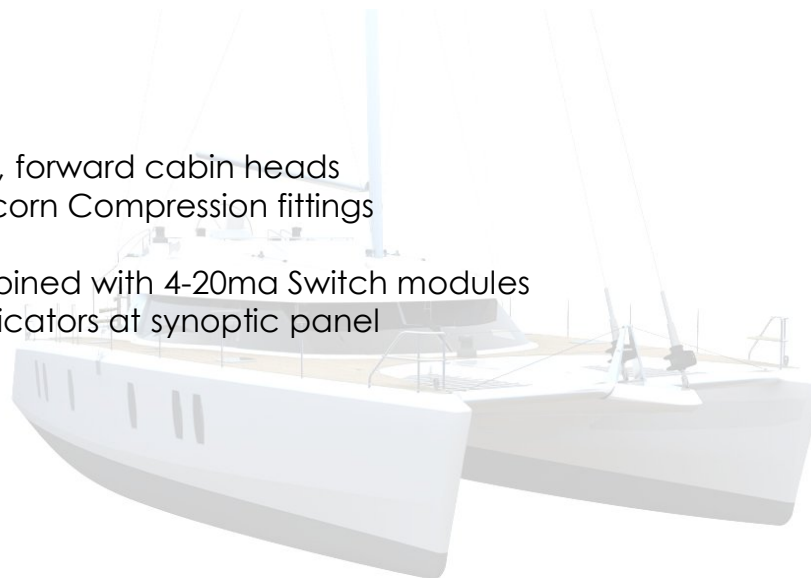
PLUMBING

Pressurised hot & cold fresh water supply-galley, day heads, forward cabin heads

Piping, valves & electric pumps as required; ABS plastic / Acorn Compression fittings

Flush fitting seacocks on all through hull fittings

All tanks to be monitored utilising Kubler Level sensors, combined with 4-20ma Switch modules giving high and low level switched alarm outputs, Level Indicators at synoptic panel



Plumbing cont..

Freshwater

- Aluminium custom made tanks x 4 total 960L, 2 port 2 stbd)
- Polypropylene inspection covers and removable baffles
- 2 x 75 liters water heaters
- Shore connectivity/inlet

Grey water

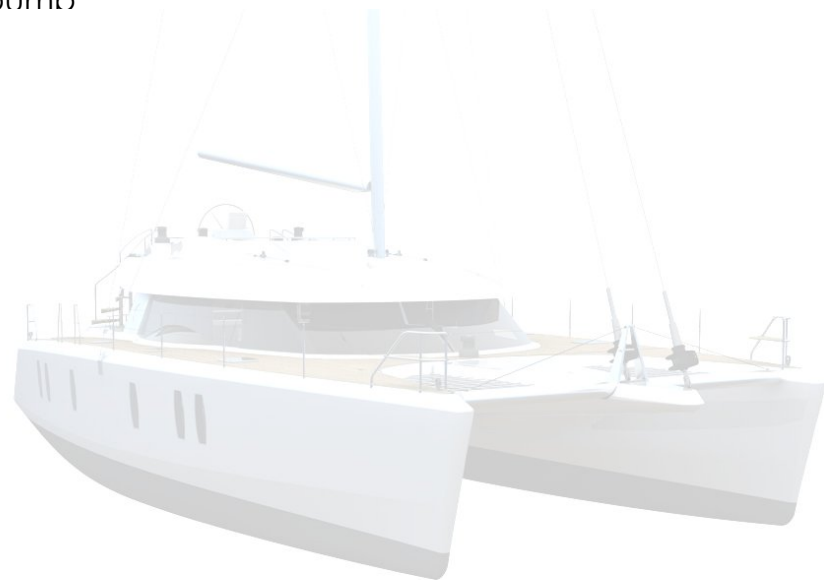
- 2 x Aluminium tanks
- 3 off 24vdc Tecma Saniflow Grey Sump/Pumps
- all to discharge directly overboard or to holding tanks
- Shower sump with drain, float switch and high capacity pump

Black water

- Full size electric quiet flush, fresh water toilets in all h
- 2 x holding tanks each
- Discharge direct overboard or discharge for marina
- Discharge valve lockable for local auth rules

Drainage

- CE compliant @ CAT A OCEAN certification drainage
- 1 x electric bilge pump per hull plus 1 x manual pump





ENGINE AND TRANSMISSION

- Yanmar 40-75 HP options
- Saildrive transmission or Shaft
- Storage area in engine rooms for spares
- fixed 3 blade propeller or folding propeller (optional extra)
- Ventilation/aspiration
- 12v outlet per engine compartment
- Sound insulation
- Fire protection system

FUEL CAPACITY

- 2 x Aluminum diesel tanks 500l each total: 500l
- Tank fittings
- Electric gauges (and manual backup?)
- Viewport/Sight Gauge & inspection hatch
- Filtering circuit
- Remote shutoff and location
- Transfer pump (if required)
- Number of fills and location
- Number of vents (one per tank)
- Genset feed

STEERING SYSTEM

- autopilot
- Wireless remote auto pilot control
- Hydraulic steering

Contact details

Bay Yacht Agency

Tel: 410-263-2311

Email: info@bayacht.com

Web: www.bayacht.com/aaa/Isara/Isara50.htm